

STANDARD INSTRUMENT
APPROACH CHART - ICAO

Kathmandu - VNKT

CAT. : A B C D AD ELEV: 4395, THR ELEV: 4318 (148 hPa)

RNAV (RNP) - APPROACH - RWY02

APP: 120.6
TWR: 118.1
GND: 121.9

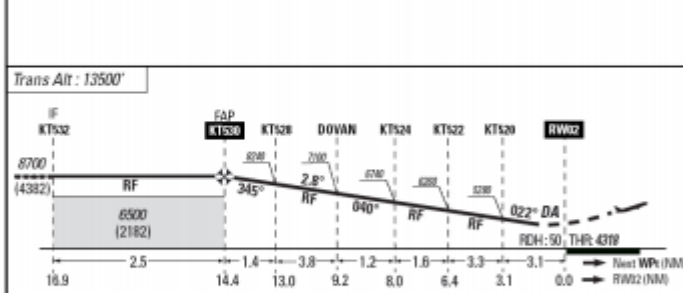
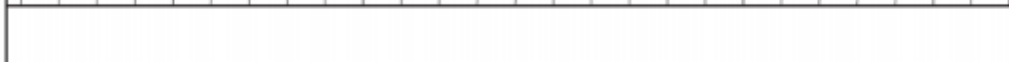
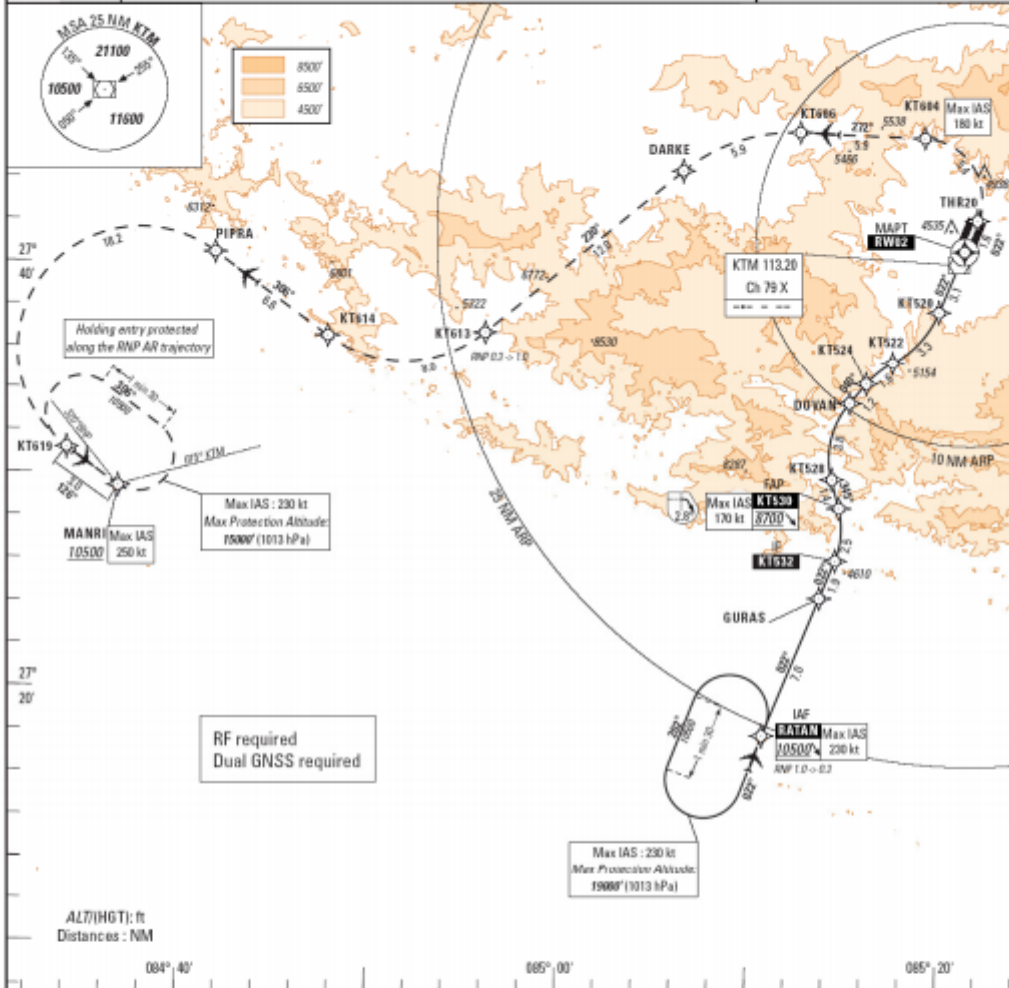
AUTHORIZATION REQUIRED

VAR: 0°W (10)

APP 1

Minimum Temperature: -10°C

ARP: 27°41'50"N 085°21'29"E



CAT	RNP 0.3		
	DA (H)	VIS (m) ALS	VIS (m) no ALS
A	4600 (290)	600	1500
B	4630 (320)	800	1700
C	4650 (340)	900	1800
D	4670 (360)	1100	1900

Missed Approach
RNP 0.3 until **KT613**
Climb to 10500' via the RNAV (RNP) missed approach to **MANRI**.
At **MANRI** hold or start a new approach via **MANRI1R** transition.

Procedure design and charting : by ENAC/CSG AERO for QUOVADIS - © 2012